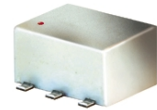


# Surface Mount Frequency Mixer

## ADE-12MH+ ADE-12MH

Level 13 (LO Power +13 dBm) 10 to 1200 MHz



### Maximum Ratings

Operating Temperature	-40°C to 85°C
Storage Temperature	-55°C to 100°C
RF Power	200mW
IF Current	40mA

### Pin Connections

LO	6
RF	3
IF	2
GROUND	1,4,5

### Features

- low conversion loss, 6.3 dB typ.
- good L-R isolation, 45 dB typ.;
- L-I isolation, 42 dB typ.
- low profile package
- aqueous washable
- protected by U.S. Patent 6,133,525

### Applications

- cellular
- VHF/UHF receivers

CASE STYLE: CD542

PRICE: \$6.45 ea. QTY (10-49)

**+ RoHS compliant in accordance with EU Directive (2002/95/EC)**

The +Suffix identifies RoHS Compliance. See our web site for RoHS Compliance methodologies and qualifications.

### Electrical Specifications

FREQUENCY (MHz)	CONVERSION LOSS (dB)	LO-RF ISOLATION (dB)			LO-IF ISOLATION (dB)			IP3 at center band (dBm)										
		L	M	U	L	M	U											
10-1200	DC-1200	6.3	0.10	8.0	8.5	62	45	45	32	40	26	68	40	42	27	30	20	22

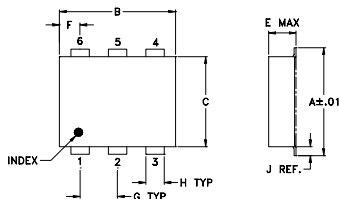
1 dB COMP.: +9 dBm typ.

L = low range [ $f_l$  to  $10 f_l$ ]  
m = mid band [ $2 f_l$  to  $f_l/2$ ]

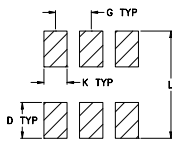
M = mid range [ $10 f_l$  to  $f_l/2$ ]

U = upper range [ $f_l/2$  to  $f_l$ ]

### Outline Drawing



### PCB Land Pattern



Suggested Layout,  
Tolerance to be within ±.002

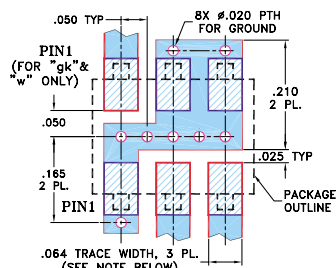
### Outline Dimensions (inch/mm)

A	B	C	D	E	F	G
.272	.310	.220	.100	.112	.055	.100
6.91	7.87	5.59	2.54	2.84	1.40	2.54

H	J	K	L	wt
.030	.026	.065	.300	grams
0.76	0.66	1.65	7.62	0.20

### Demo Board MCL P/N: TB-03 Suggested PCB Layout (PL-052)

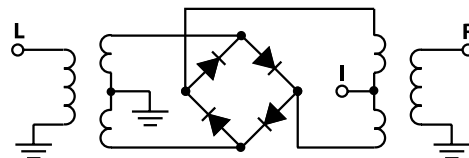


- NOTES: 1. TRACE WIDTH IS SHOWN FOR ROGERS R04350B WITH DIELECTRIC THICKNESS .030" ± .002"; COPPER: 1/2 OZ. EACH SIDE. FOR OTHER MATERIALS TRACE WIDTH MAY NEED TO BE MODIFIED.  
2. BOTTOM SIDE OF THE PCB IS CONTINUOUS GROUND PLANE.
- DENOTES PCB COPPER LAYOUT WITH SMOBC (SOLDER MASK OVER BARE COPPER)
  - DENOTES COPPER LAND PATTERN FREE OF SOLDER MASK

### Typical Performance Data

Frequency (MHz)		Conversion Loss (dB)	Isolation L-R (dB)	Isolation L-I (dB)	VSWR RF Port (:1)	VSWR LO Port (:1)
RF	LO	LO +13dBm	LO +13dBm	LO +13dBm	LO +13dBm	LO +13dBm
10.00	40.00	6.42	66.67	60.68	1.54	1.59
15.00	45.00	6.45	65.33	59.84	1.52	1.59
20.00	50.00	6.41	64.50	59.34	1.54	1.56
40.00	70.00	6.40	62.00	56.67	1.55	1.52
70.00	100.00	6.50	58.50	54.67	1.52	1.46
105.74	135.74	6.48	56.16	53.17	1.54	1.48
150.00	180.00	6.56	53.49	52.50	1.56	1.50
210.97	240.97	6.44	51.17	55.51	1.56	1.50
316.21	346.21	6.49	48.50	49.00	1.61	1.50
421.45	451.45	6.61	47.17	44.16	1.62	1.49
526.68	556.68	6.63	45.33	39.67	1.65	1.51
570.00	600.00	6.78	44.67	38.33	1.74	1.56
600.00	630.00	6.77	44.67	38.01	1.73	1.54
737.16	767.16	7.05	45.33	37.17	1.77	1.49
842.40	872.40	7.74	43.17	35.66	1.95	1.46
947.63	977.63	6.98	40.83	32.34	2.07	1.45
1000.00	1030.00	6.54	40.33	30.99	2.10	1.36
1052.87	1082.87	6.37	39.50	29.83	2.13	1.28
1170.00	1200.00	6.60	37.67	29.34	2.28	1.12
1200.00	1230.00	6.70	37.00	29.34	2.41	1.09

### Electrical Schematic



**Mini-Circuits**

INTERNET <http://www.minicircuits.com>

P.O. Box 350166, Brooklyn, New York 11235-0003 (718) 934-4500 Fax (718) 332-4661

Distribution Centers NORTH AMERICA 800-654-7949 • 417-335-5935 • Fax 417-335-5945 • EUROPE 44-1252-832600 • Fax 44-1252-837010

Mini-Circuits ISO 9001 & ISO 14001 Certified



REV. C  
M98898  
ADE-12MH  
ED-7607/1  
DJ/TD/CP/AM  
060613  
Page 1 of 2

## Performance Charts

